

S111

ALUMINUM

INCLINOMETER CASINGS

INCLINOMETERS
& PENDULUMS



ALUMINUM INCLINOMETER CASINGS

Inclinometer casings are special grooved tubes, generally installed into drilled holes, used in conjunction with inclinometer system or in-place inclinometers to determine sub-surface ground displacements.

The inclinometer casing conforms to deformations of soil or rock in where they are installed.

Deep grooves with low casing twisting (spiral) provide precise operation and orientation of inclinometer probe during surveying.

APPLICATIONS

- Landslides
- Diaphragms and retaining walls
- Dams and embankments
- Deep excavations
- Tunneling

FEATURES

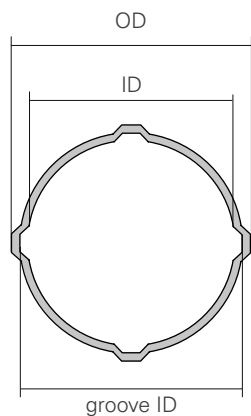
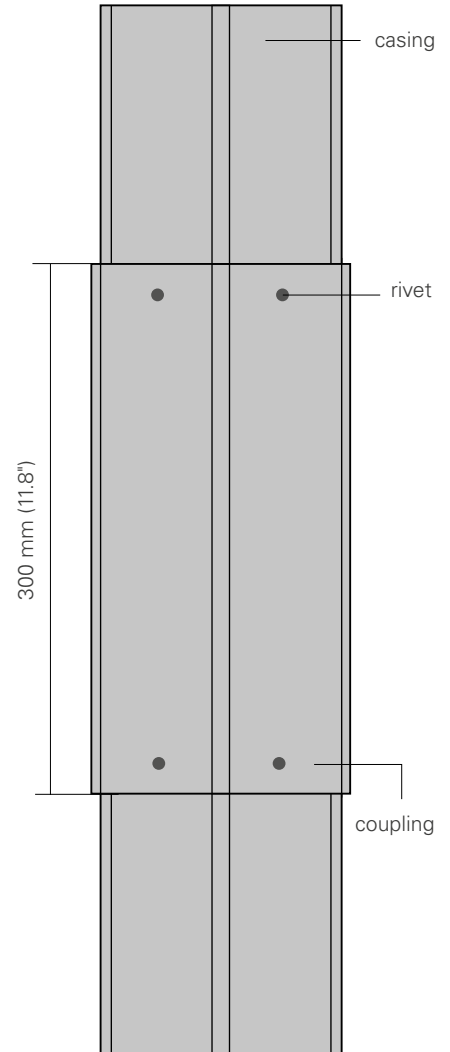
- Deep installation allowed (over 150 m dept)
- Suitable for all inclinometer systems in the market
- Available in two size (58 mm and 87 mm OD)

CE Meets the essential requirements of the EMC Directive 2004/108/EC

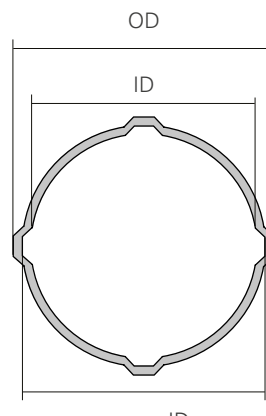
TECHNICAL SPECIFICATIONS

PRODUCT CODE	OS111007500	OS111005400
Description	76 mm (3") ID casing	49 mm (2") ID casing
Material	Aluminum	Aluminum
Outer diameter (OD)	87 mm (3.4")	58 mm (2.3")
Inner diameter (ID)	76 mm (3.0")	49 mm (2.0")
Groove inner diameter	83 mm (3.4")	54 mm (2.1")
Thickness	2 mm (0.08")	2 mm (0.08")
Casing length	3 meter (9.9 ft)	3 meter (9.9 ft)
Casing weight	4.2 kg (9.3 lb)	2.8 kg (6.1 lb)
Spiral	< 1.0° / 3 m	< 1.0° / 3 m
Suggested borehole drilling diameter	127 mm (5")	101 mm (4")

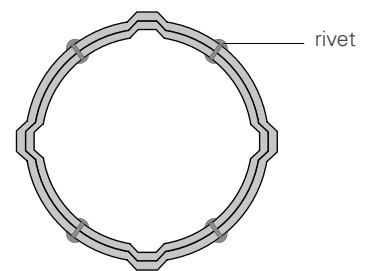
PRODUCT CODE	OS111MF7500	OS111MF5400
Description	Coupling for 76 mm casing	Coupling for 49 mm casing
Material	Aluminum	Aluminum
Outer diameter (OD)	92 mm (3.6")	62.6 mm (2.5")
Inner diameter (ID)	81 mm (3.2")	54.2 mm (2.1")
Groove inner diameter	87.5 mm (3.4")	59.2 mm (2.3")
Thickness	2.25 mm (0.09")	1.7 mm (0.07")
Length	300 mm (11.8")	300 mm (11.8")
Weight	0.50 kg (1.1 lb)	0.25 kg (0.55 lb)



CASING SECTION



COUPLING SECTION



CASING AND COUPLING SECTION

ACCESSORIES AND SPARE PARTS

GROUTING VALVE OS100VR0000

This removable valve fits bottom grout cap OS100VF0000. Valve have to be connected to the injection tube and lowered into the casing.

BOTTOM GROUT CAP OS100VF0000

It substitutes the simple bottom cap when grouting is requested by using removable valve.

S111 TOP/BOTTOM CAP OS111TS0000

Simple top or bottom cap for S111 aluminum casings, made by ABS.

LOCKABLE TOP CAP OS100CH1000

Consists of a 12" steel sleeve and an ABS plastic top. The sleeve is embedded in the concrete pad at the top of the casing. The top consists of a collar and a hinged lid. The collar has a clamp that holds a pulley. The lid has a survey pin and can be locked.



CASING ASSEMBLY KIT OS1ALKIT200

Suitable for 100 m of casing, it includes rivets, adhesive tape, self-amalgamating tape and three drill bits.



All the information in this document is the property of Sisgeo S.r.l. and should not be used without permission from Sisgeo S.r.l. We reserve the right to change our products without prior notice. The datasheet is issued in English and other languages. In order to avoid discrepancies and disagreement on the interpretation of the meanings, Sisgeo Srl declares that English Language prevails.

SISGEO S.R.L.

VIA F. SERPERO 4/F1
20060 MASATE (MI) ITALY
PHONE +39 02 95764130
FAX +39 02 95762011
INFO@SISGEO.COM

TECHNICAL ASSISTANCE

SISGEO offers customers e-mail and phone assistance to ensure proper use of instruments and readout and to maximize performance of the system.

For more information, email us: assistance@sisgeo.com