



— MD-PROFILE SYSTEM MAIN APPLICATIONS

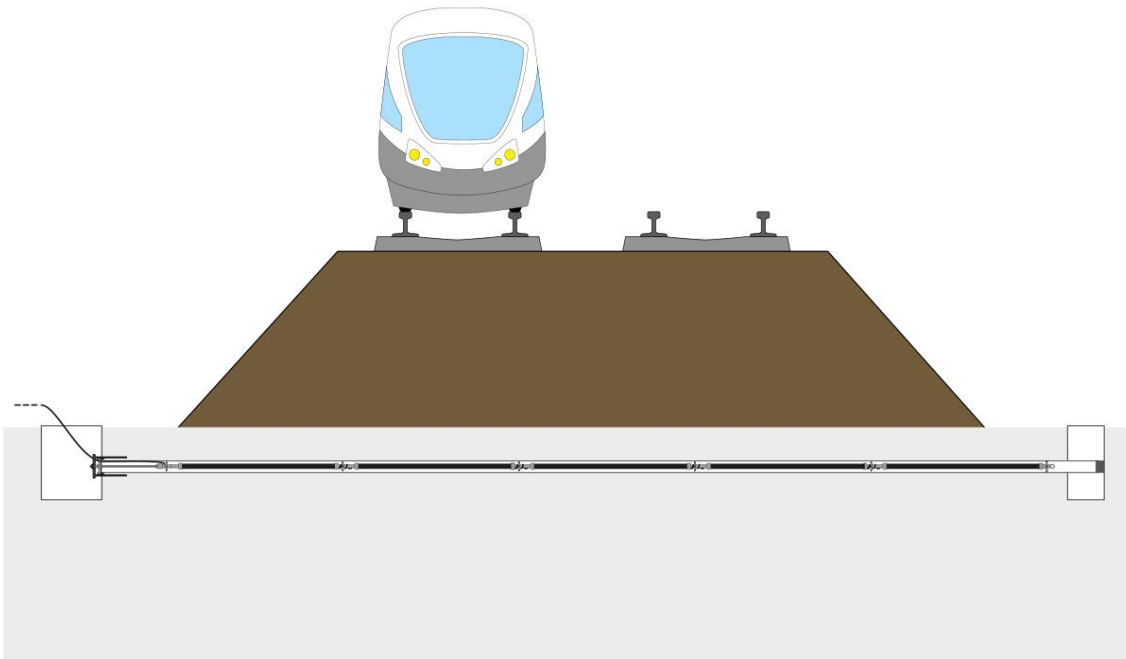


— APPLICATIONS

- Embankments
- Deep excavations
- Retaining walls
- Tunneling
- Landslides
- LNG tanks
- Open pit mines



__ APPLICATION SCHEME: EMBANKMENTS



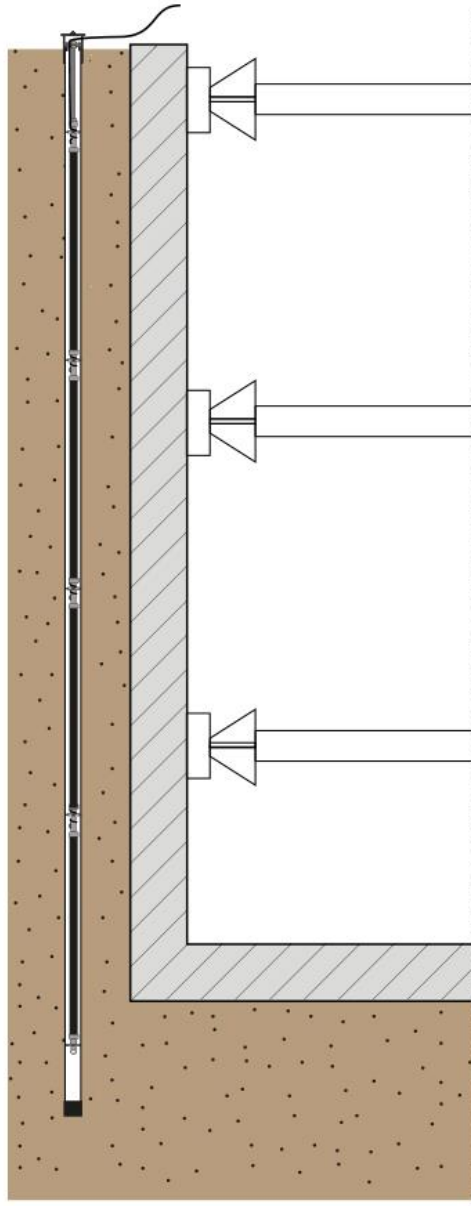
Application:

- *In this application MD-Profile System measures a chain of inclinations on rigid rods, helping to detect the embankment settlement and deformation (cumulative displacement).*

Installation:

- *2.0" tube grouted in the foundation.*
- *MD-Profile array installed within tubes.*

__ APPLICATION SCHEME: DEEP EXCAVATION



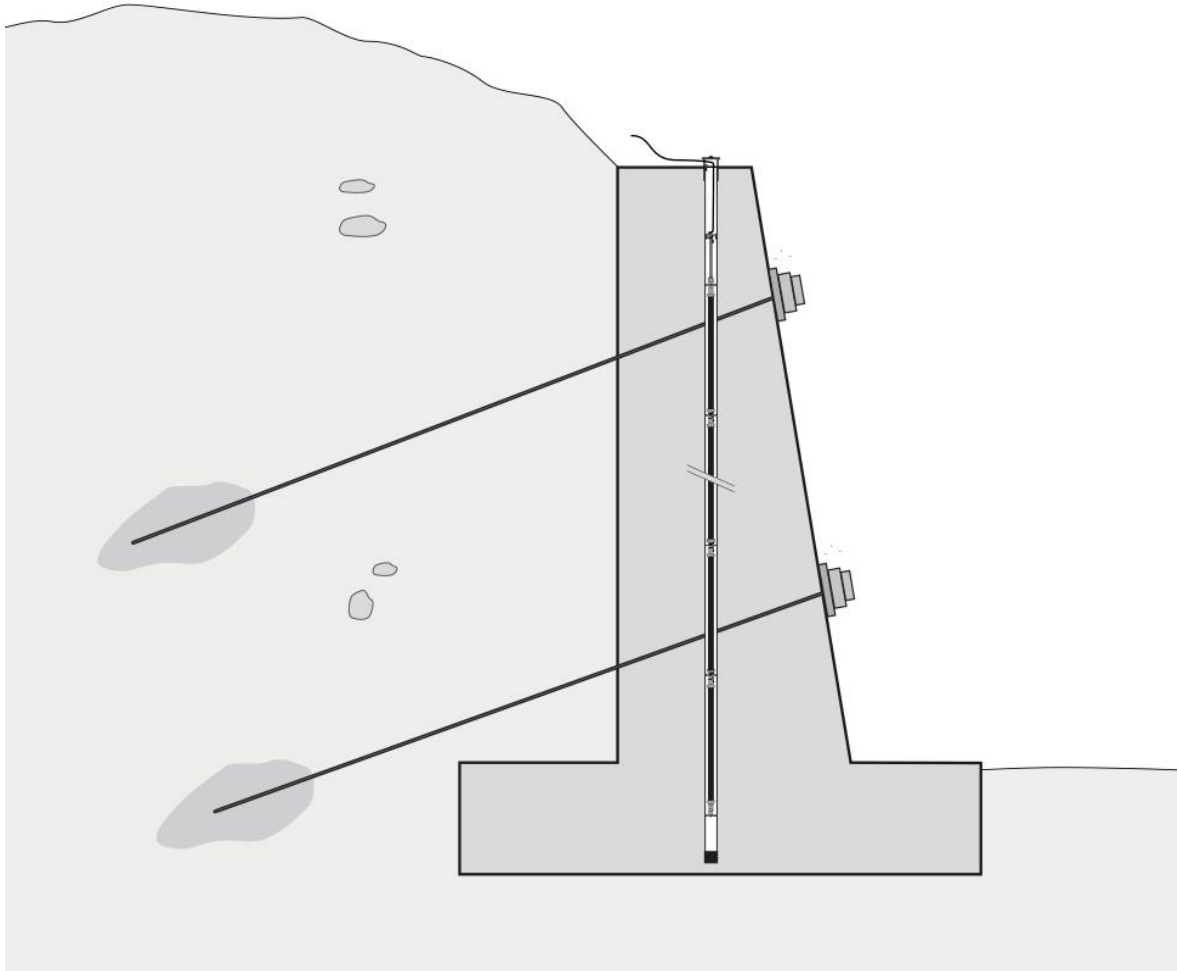
Application:

- *In this application MD-Profile System measures a chain of inclinations on rigid rods, helping to detect the diaphragm horizontal movement and deflection (cumulative displacement).*

Installation:

- *MD-Profile array installed within 1.5" or 2.0" grouted tubes.*

__ APPLICATION SCHEME: RETAINING WALLS



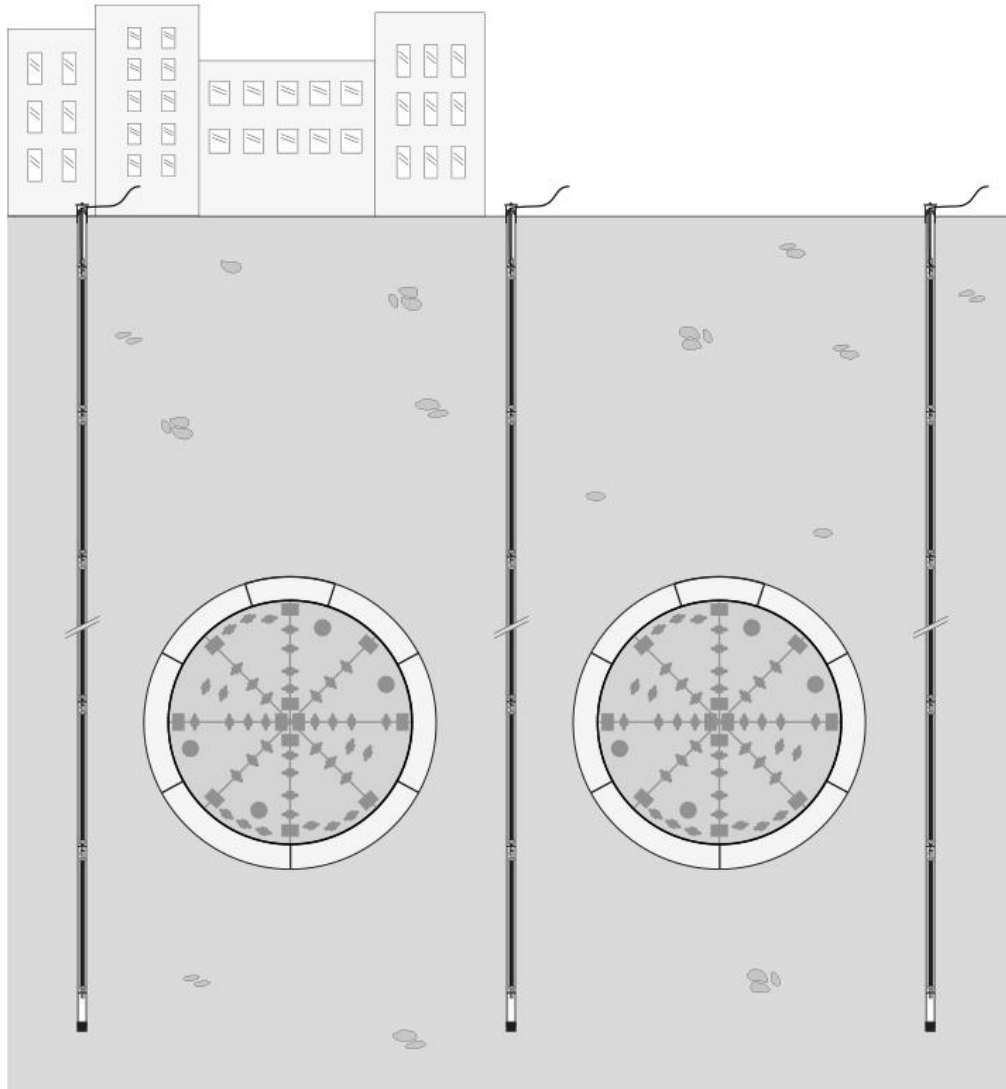
Application:

- *In this application MD-Profile System measures a chain of inclinations on rigid rods, helping to detect the structure horizontal movement and deformation (cumulative displacement).*

Installation:

- *MD-Profile array installed within 1.5" or 2.0" grouted tubes.*

APPLICATION SCHEME: TUNNELING



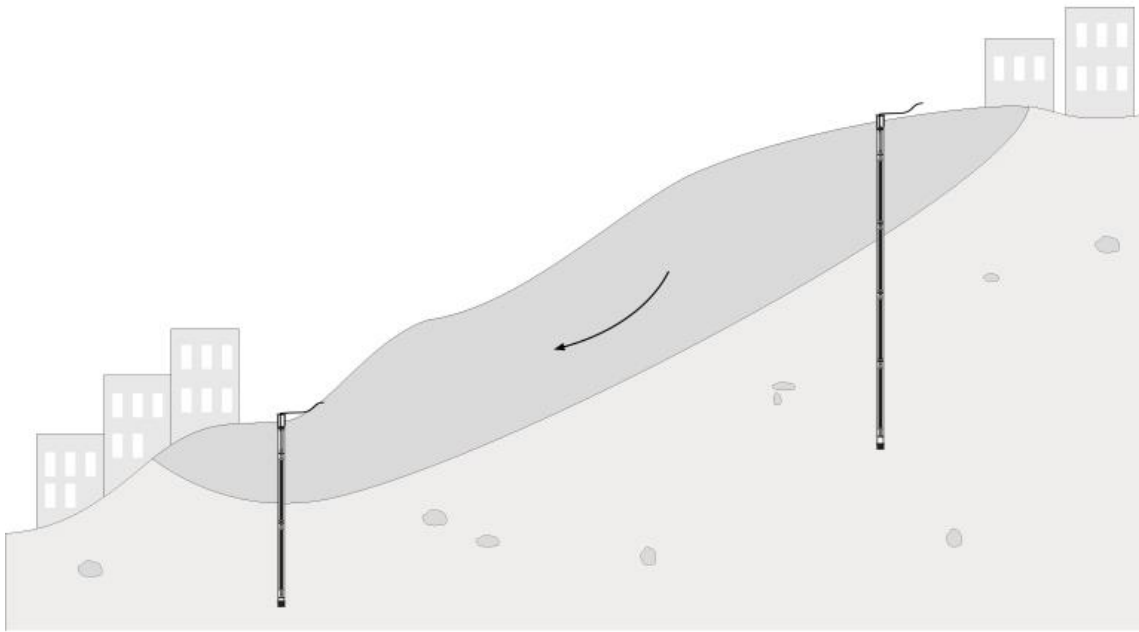
Application:

- *In this application MD-Profile System measures a chain of inclinations on rigid rods, helping to detect the ground horizontal movement and deformation (cumulative displacement).*

Installation:

- *MD-Profile array installed within 1.5" or 2.0" grouted tubes.*

__ APPLICATION SCHEME: LANDSLIDES



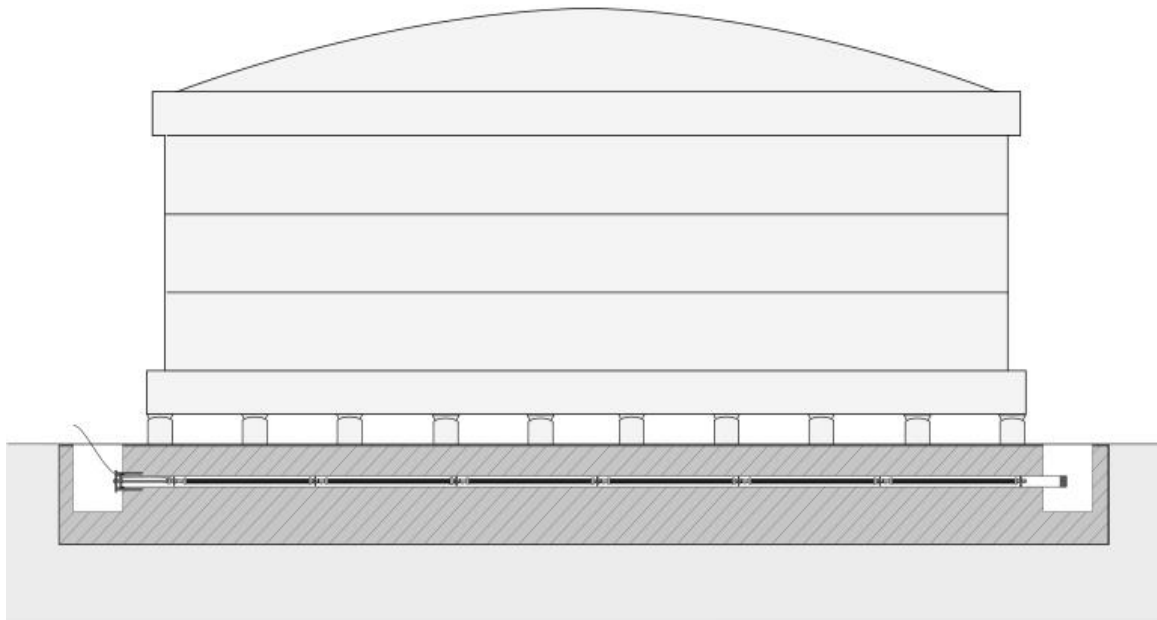
Application:

- *In this application MD-Profile System measures a chain of inclinations on rigid rods, helping to detect the ground horizontal movement and deformation (cumulative displacement).*

Installation:

- *MD-Profile array installed within 1.5" or 2.0" grouted tubes.*

__ APPLICATION SCHEME: LNG TANKS



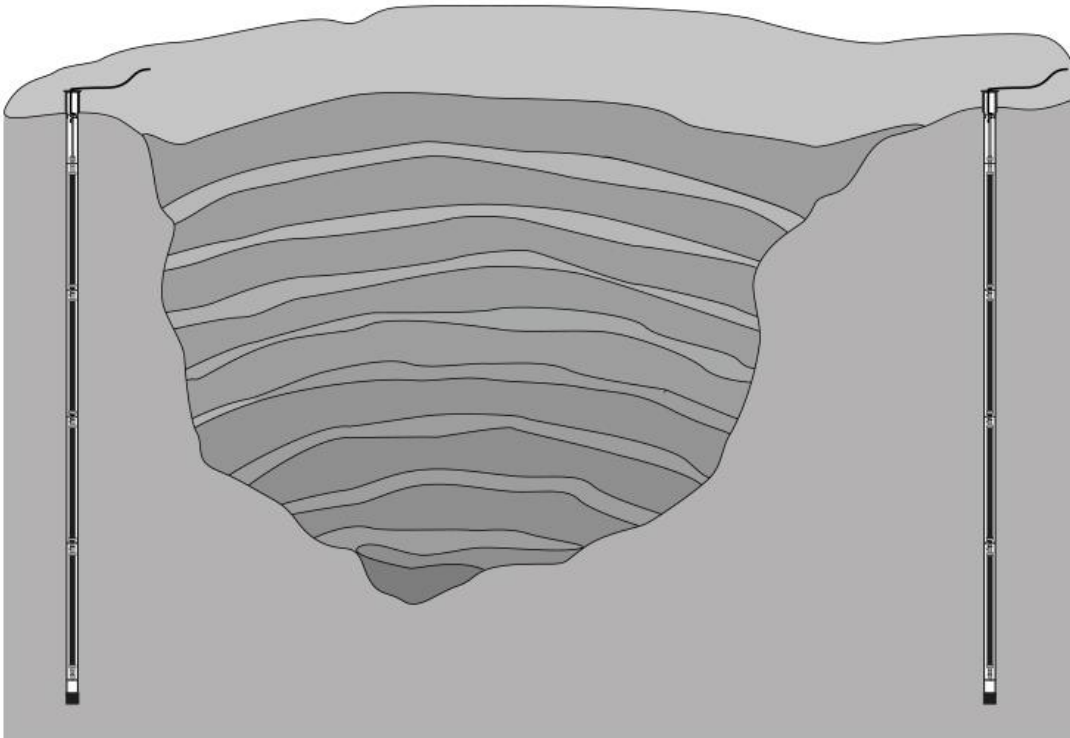
Application:

- *In this application MD-Profile System measures a chain of inclinations on rigid rods, helping to detect vertical movement and deformation of the tank foundation (cumulative displacement).*

Installation:

- *MD-Profile array installed within 2.0" grouted tubes.*

__ APPLICATION SCHEME: OPEN PIT MINES



Application:

- *In this application MD-Profile System measures a chain of inclinations on rigid rods, helping to detect the rock horizontal movement and deformation (cumulative displacement).*

Installation:

- *MD-Profile array installed within 1.5" or 2.0" grouted tubes.*



SISGEO S.R.L.

VIA F. SERPERO 4/F1
20060 MASATE (MI) ITALY
PHONE +39 02 95764130

INFO@SISGEO.COM

WWW.SISGEO.COM

All the information in this document is the property of Sisgeo S.r.l. and should not be used without permission from Sisgeo S.r.l. We reserve the right to change our products without prior notice. The datasheet is issued in English and other languages. In order to avoid discrepancies and disagreement on the interpretation of the meanings, Sisgeo Srl declares that English Language prevails.