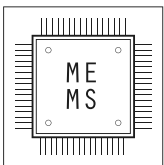


S430

**BH PROFILE**  
**IPI INCLINOMETERS**

INCLINOMETERS  
& PENDULUMS





## BH PROFILE INCLINOMETERS

BH-profile IPI gauges are designed for automatic, near-real-time monitoring of critical locations where displacements must be tracked continuously.

Each gauge comprises a stainless-steel body with a connection for a carbon-fibre extension rod on one side and a stainless-steel carriage with spring-loaded wheels on the other side. A BH-profile chain consists of a string of such gauges joined by carbon-fibre rods and a top terminal wheels assembly.

Gauges are electrically linked by waterproof male/female connectors and connect to a readout or datalogger via a single digital-bus cable. For full installation and maintenance procedures, refer to the Installation & User Manual

### MAIN APPLICATIONS

- Landslides
- Dams
- Tunneling
- Deep excavations
- Unstable slopes

### FEATURES

- Carbon-fibre rods provide light strings and simpler installation
- Digital bus reduces wiring and speeds up installation
- Integrated humidity and power sensors provide diagnostic data in case of gauge malfunction.

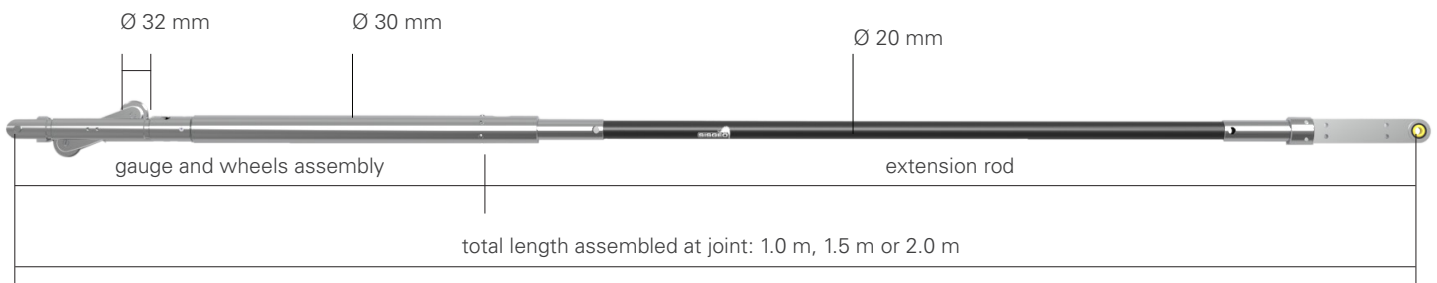
**CE** *Meet the essential requirements of the EMC Directive 2014/30/EU*

## TECHNICAL SPECIFICATIONS<sup>(1)</sup>

	0S432HD15S0	0S432HD30S0
Measurement principle	BIAXIAL MEMS inclinometer	
Measuring range	±10°, ±15°	±20°, ±30°
Sensor resolution	0.0001°	
Sensor repeatability	±0.001°	
Sensor mechanical bandwidth	1 Hz	
Sensitivity <sup>(2)</sup>	see individual Calibration Report	
Sensor accuracy MPE <sup>(3)</sup>	< ±0.01% FSR	
Sensor 24h stability <sup>(4)</sup>	< ±0.004° @24h	
Repeatability (precision) of a string of BH profile elements <sup>(5)</sup>	< ±2.00 mm / 30 m (A-axis)	
Offset temperature dependancy	±0.002° / °C	
Power supply	from 8 to 28 Vdc	
Signal output and protocol	RS-485 with Modbus RTU protocol <sup>(6)</sup>	
A/D converter	sigma-delta 32 bit, 38-KSPS	
Average consumption	4,3 mA @ 24 Vdc, 8 mA @ 12 Vdc	
Temperature operating range	from -30°C to +70°C	
Built-in temperature sensor range / accuracy	Temperature sensor (embedded in electronic board) from -40°C to +125°C / ±1 °C (-10°C + 85°C)	

## PHYSICAL FEATURES

	GAUGE AND WHEELS ASSEMBLY	EXTENSION ROD
Material	stainless steel	stainless steel joint tips and carbon fiber rod
IP class	IP68 up to 1.0 MPa (2.0 MPa on request)	--
Casing compatibility <sup>(7)</sup>	Min. casing ID 58 mm - Max casing ID 83 mm	--
Gauge length / Total weight <sup>(8)</sup>	1.0 m length / 2.30 kg - 1.5 m length / 2.40 kg - 2.0 m length / 2.50 kg	



(1) Performance are guaranteed for instruments installed in vertical casings whose inclination stays within ±2° of vertical at any point (see ISO 18674-3)

(2) Sensitivity is instrument-specific and reported in the individual Calibration Report.

(3) MPE = Maximum Permissible Error over the full-scale range (FS). See the Calibration Report for details.

(4) Stability measured as difference after 24 h under repeatability conditions (ISO 18674-3).

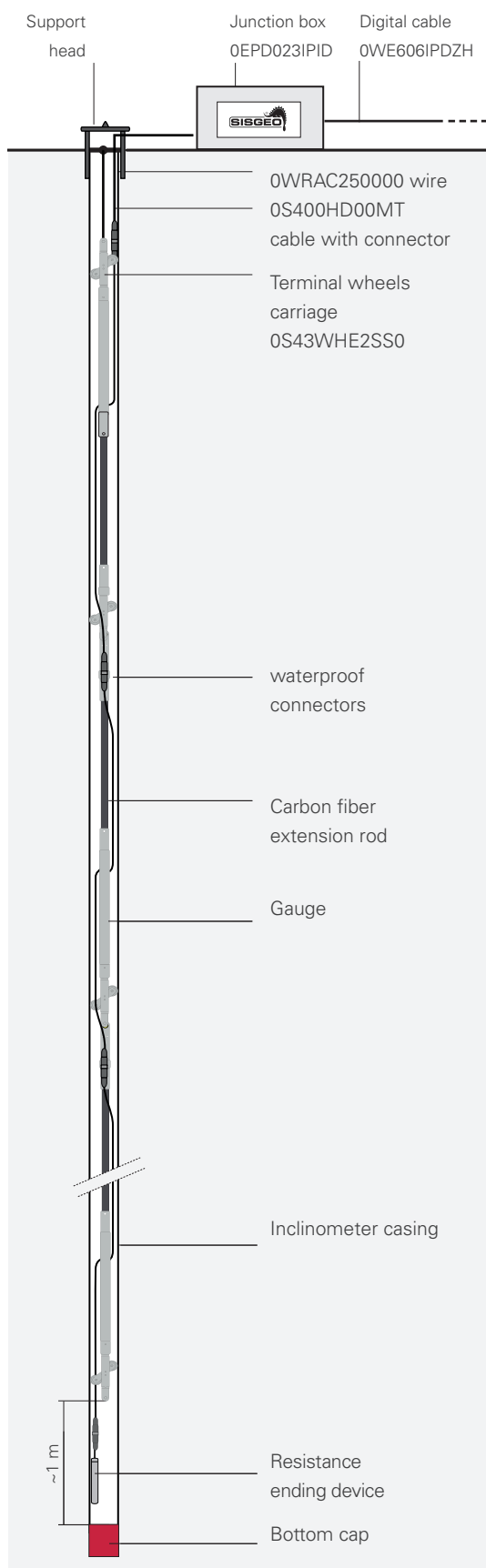
(5) Repeatability test: 60-day test; reference reading taken 96 h after installation; 15-gauge chain, 2 m rods.

(6) RS485 not-optoisolated Modbus communication with RTU Protocol. Default output is sen α, other units available are degree, mm/m and inch/feet (to be requested at order). Siggeo Modbus protocol manual is available for download at [this page](#).

(7) We strongly suggest to use Siggeo ABS casing

(8) As for ISO 18674-3 standard, total length should not exceed 2 m. Gauges with longer extension rods available on request. Performances of gauges with extension rods longer than 2m could be worst than what reported in this datasheet.

## ACCESSORIES AND SPARE PARTS



to datalogger

### CARBON FIBRE EXTENSION ROD 0S430EX00RD

Extension rod connected to the BH profile gauge at factory. Available in different dimensions to reach a total length of 1.0 m, 1.5 m and 2.0 m (length to be specified at order).

### TERMINAL WHEELS CARRIAGE 0S43WHE2SS0

Composed by stainless steel spring loaded carriage with two wheels. Permits to end the BH profile chain at the top.

### UPPER CABLE WITH CONNECTOR 0S400HD00MT

Available in different lengths (2m, 5m, 10m, 15m), it is composed by a signal cable with IP68 connector to link the upper inclinometer probe to the junction box or local logger.

### INCLINOMETER SUPPORT HEAD 0S4TS101000

It is installed at the top of inclinometer casings for hanging the in-place inclinometer string.

### DIGITAL INCLINOMETER CABLE 0WE606IPDZH

LSZH cable for connecting digital BH profile chain to OMNIAlog datalogger.

### DIGITAL JUNCTION BOX 0EPD023IPID

Junction box for chains of digital instruments, composed by IP67 plastic box, internal electronic board for wiring and three cable glands.

### SUPPORT STEEL WIRE 0WRAC250000

Stainless steel support wire, Ø 2.5 mm (used to suspend the BH profile string)

### RESISTANCE ENDING DEVICE 0ETERMRESIO

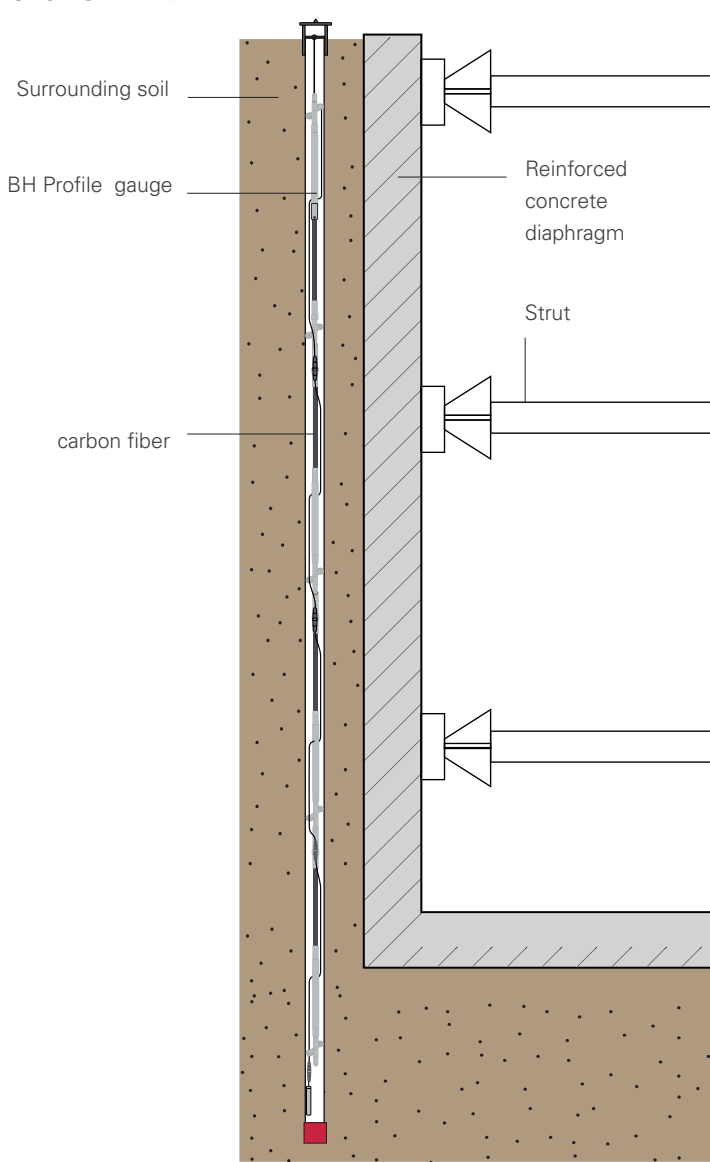
Termination resistance with connector, needed to close every digital BH Profile chain. The value of resistor depends on the layout of each BH Profile system. For more detail see the [FAQ#076](#).

### RESISTANCES KIT (SPARE) 0ERESIKIT00

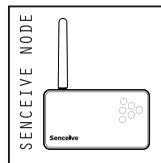
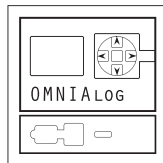
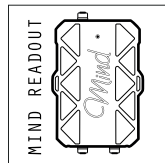
Kit composed by one 120 Ohm, two 240 Ohm, three 360 Ohm and four 480 Ohm resistance ending devices. Each one has an M12 5-pin connector for linking to SISGEO digital gauges. Check with Sales for compatibility with legacy instruments.

# TYPICAL TRENCH INSTALLATION

## SECTION VIEW



## READABLE BY



For further information refer to their own datasheets

All information in this document is the property of Sisgeo S.r.l. and shall not be used without prior written permission. The manufacturer reserves the right to modify the product and/or its components without prior notice. For instrument metrology and calibration details, refer to the individual Calibration Report.

The datasheet is issued in English and other languages. In order to avoid discrepancies and disagreement on the interpretation of the meanings, Sisgeo Srl declares that English Language prevails.

### SISGEO S.R.L.

VIA F. SERPERO 4/F1  
 20060 MASATE (MI) ITALY  
 PHONE +39 02 95764130  
 FAX +39 02 95762011  
 INFO@SISGEO.COM

### ADDITIONAL SUPPORT

SISGEO offers on-line assistance service to the Customers in order to maximize the performance of the system and training on the correct use of the instrument/readout.

For more information contact mail: [assistance@sisgeo.com](mailto:assistance@sisgeo.com)