

P252R

— VENTED PRESSURE
TRANSDUCERS

PIEZOMETERS





VENTED PRESSURE TRANSDUCERS

The vented pressure transducer is designed to provide accurate measurements of water levels in standpipes and Casagrande piezometers.

It incorporates a vented pressure transducer for automatic compensation of barometric changes.

The transducer can be read with a portable readout , or for remote data management and alerting, an OMNIAlog datalogger.

APPLICATIONS

- Monitoring water levels in reservoirs
- Monitoring ground water tables
- Monitoring dewatering operations
- Monitoring landslide remediation

FEATURES

- Automatic compensation for barometric changes
- High accuracy and reliability
- Robust 4-20mA signal (mV/V as option)
- Hermetically sealed

TECHNICAL SPECIFICATIONS

WATER LEVEL TRANSDUCER

MODEL	P252R
Application	Monitoring water tables, and water levels in Casagrande piezometers, basins, lakes, and reservoirs.
Technology	piezo-resistive pressure transducer
Available ranges (FS)	100 kPa, 200 kPa, 500 kPa, 1.0 MPa 14.5 psi, 29 psi, 72,5 psi, 145 psi
Overpressure	1.3 X Full Scale
Sensitivity	0.01 % FS
Linearity ⁽¹⁾	< ±0.25% FS
Total Accuracy ⁽²⁾	< ±0.15% FS (< ±0.1% FS on request)
Signal output	4-20 mA (mV/V on request)
Power supply	12 - 24 V DC
Thermic zero shift	0.00025 % FS /°C
Electric insulation	4 kV
Temp. operating range	-20 to +80°C
FILTER UNIT	
Material	sintered steel or vjon
Pore size	40 µm
CABLE	
Signal cable	0WE203KEOZH (For 4-20mA output) 0WE205KEOPV (For mV/V output)
Max cable length to logger ⁽³⁾	1000 m with 4-20mA output 40 m with mV/V output (for more information see FAQ#77)

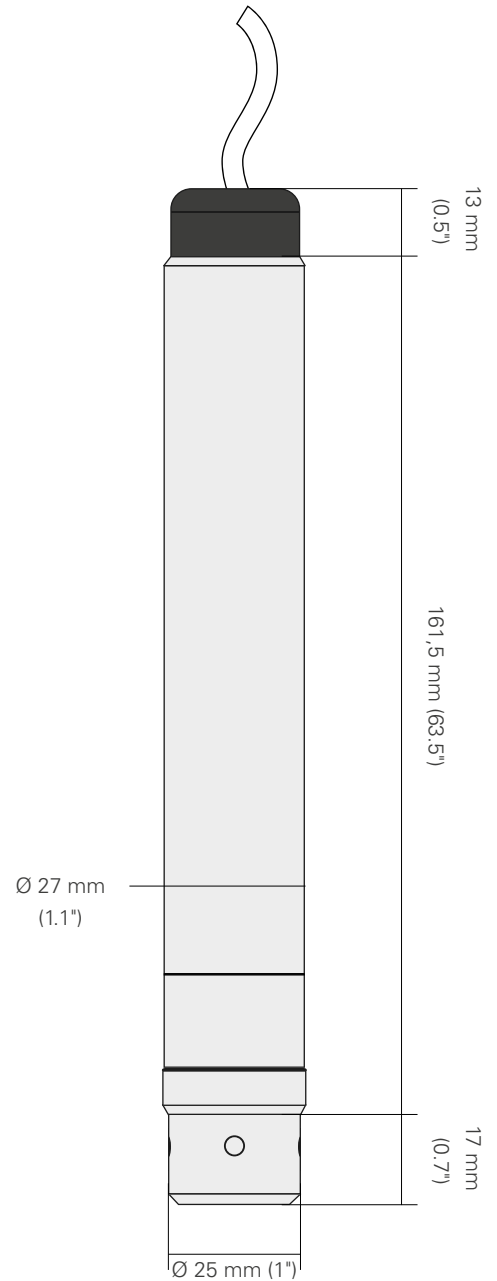
(1) including hysteresis

(2) including linearity, hysteresis and repeatability, calculated with 3rd degree polynomial

(3) refer to FAQ section of Sisgeo website: www.sisgeo.com/assistance/faq.html

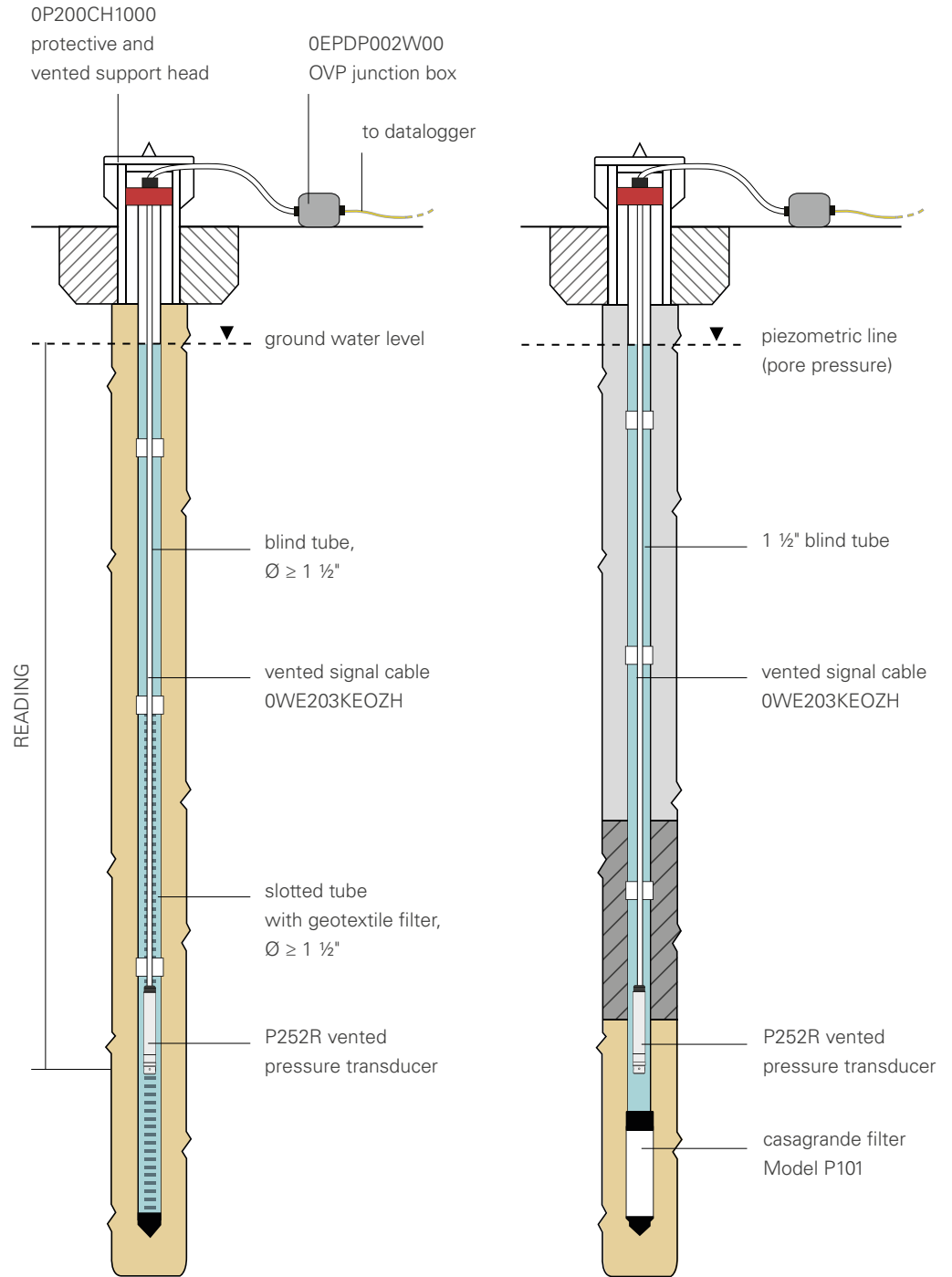
PHYSICAL FEATURES

Body diameter	Ø 27 mm (1.1")
Filter diameter	Ø 25 mm (1")
Total length	191.5 mm (75,4")
Weight	0.60 kg (13 lbs) cable not included
Material	stainless steel

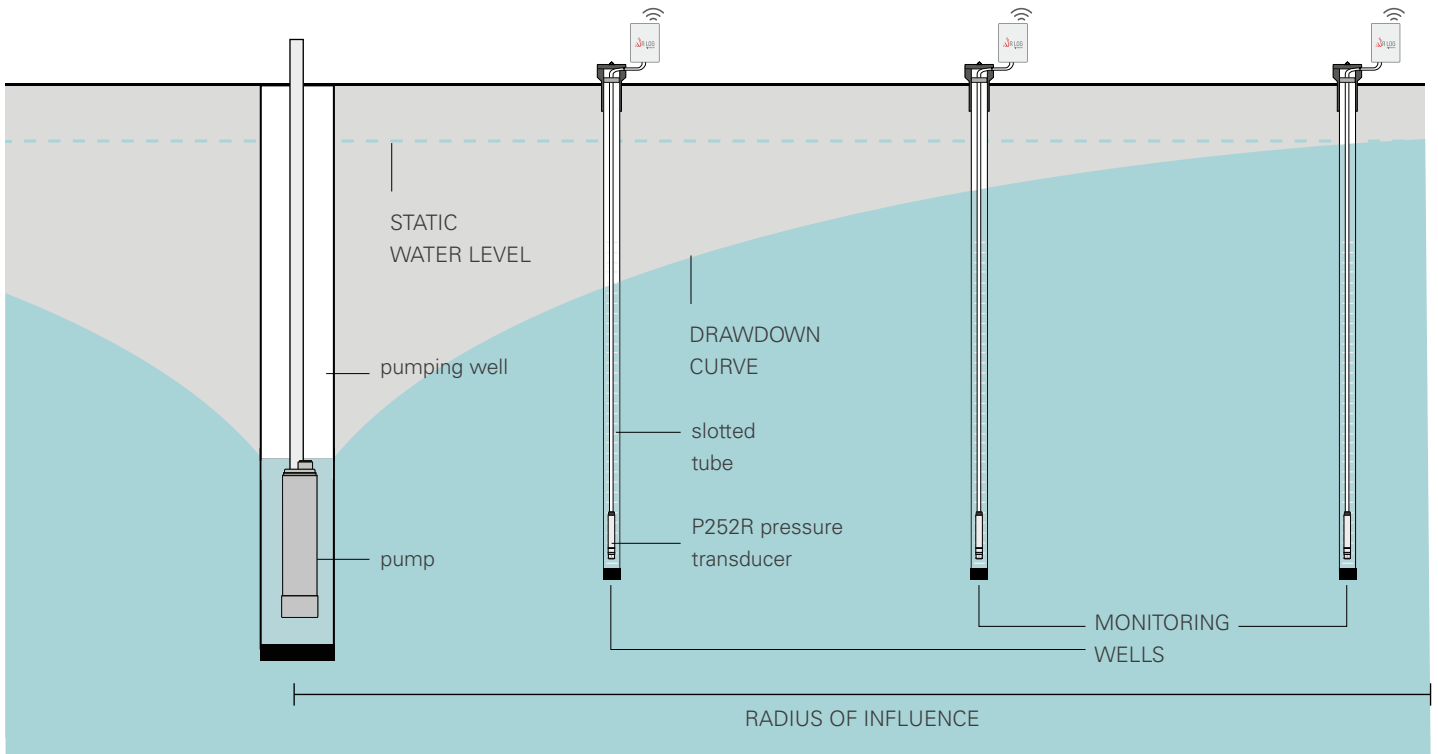


STANDPIPE AND CASAGRANDE PIEZOMETERS

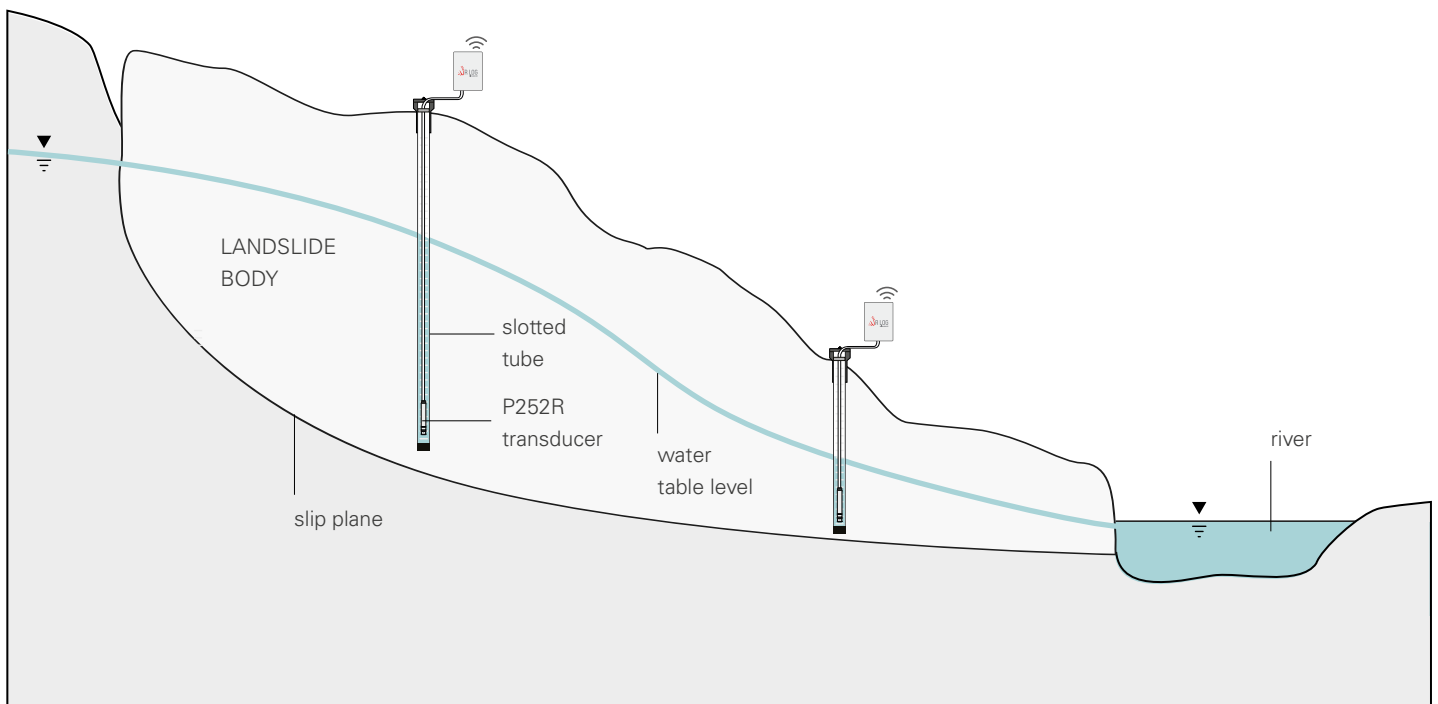
P252R vented pressure transducers are installed in standpipe and Casagrande piezometers for automatic water table level monitoring. A specially designed, vented well cap is available to hold the transducer in position without closing the vent tube inside the signal cable. When long surface runs of cable are required, over-voltage protection is recommended at the location of each transducer.



APPLICATION
IN PUMPING TEST



WATER TABLE LEVEL
MONITORING IN LANDSLIDE



ACCESSORIES AND SPARE PARTS

P252R VENTED SUPPORT HEAD OP200CH1000

Protective lockable cap for standpipe piezometers with support for P252R transducers, data plate and survey pin.



JUNCTION BOX WITH OVP OEPDP002W00

Vented junction box with 3 levels of overvoltage protection, suitable for 2-wire signal cables

SPARE LAE FILTER FOR P252R OP252AF4000

Spare LAE (Low Air Entry value) filter for P252R pressure transducers. Pore size 40 µm.

EXTENSION SIGNAL CABLES OWE102KE0ZH

2-wire, 20 AWG signal cable with flame retardant polyolefin inner jacket and LSZH M1 technopolymer external jacket. For extension after junction box with OVP.

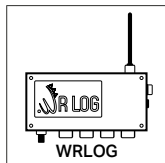
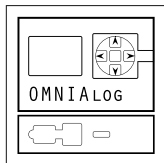
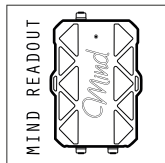
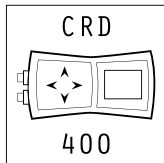
LSZH VENTED SIGNAL CABLE OWE203KE0ZH

2-wire, 20 AWG signal cable with vented tube for barometric compensation suitable for 4-20mA output. Flame retardant polyolefin inner jacket and LSZH M1 technopolymer external jacket.

PVC VENTED CABLE OWE205KE0PV

4-wire, 24 AWG signal cable with vented tube for barometric compensation suitable for mV/V output. Flame retardant polyolefin inner jacket and PVC external jacket.

READABLE BY



For further information refer to their own datasheets

All the information in this document is the property of Sisgeo S.r.l. and should not be used without permission from Sisgeo S.r.l. The manufacturer reserves the right to make changes to the product or to its parts without prior notice, also on the basis of contingent situations not related to the technical characteristics alone, such as, for example, material or components shortages. For the specific accuracy performance of each product, please refer to the Calibration Report issued for each instrument. The datasheet is issued in English and other languages. In order to avoid discrepancies and disagreement on the interpretation of the meanings, Sisgeo Srl declares that English Language prevails.

SISGEO S.R.L.

VIA F. SERPERO 4/F1
20060 MASATE (MI) ITALY
PHONE +39 02 95764130
FAX +39 02 95762011
INFO@SISGEO.COM

TECHNICAL ASSISTANCE

SISGEO offers customers e-mail and phone assistance to ensure proper use of instruments and readout and to maximize performance of the system.

For more information, email us: assistance@sisgeo.com